

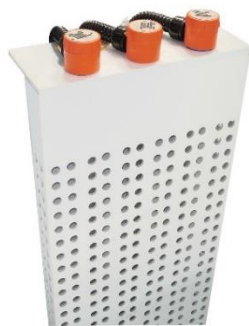
## Over-the-Side Electric Immersion Heaters

Over-the-side electric immersion heaters are widely used in the metal finishing industry in plating tanks due to their convenience at lesser cost when compared to a [Bottom or L-shaped Electric Immersion Heater](#). Another advantage is the [chemical solution](#) doesn't need to be drained to change heaters like with [screw plug](#) or [flanged](#) immersion heaters. Over the side Immersion Heaters are typically used in smaller tanks (or in larger tanks with a steering device for temperature uniformity) with lower temperatures and for [deep tanks](#) as used in the chrome plating industry. We make [immersion heaters for up to 40ft deep tanks](#).

These industrial immersion heaters are used in tanks where through-the-wall heaters cannot be installed, portability is required or where heaters must be removed without emptying the tank. They are suitable for freeze protection, or heating viscous materials (example: passivating tanks). [L-shaped heaters](#) have the advantage is better heat distribution. With the heating elements on the bottom there is less chance of exposure to air which will cause premature burn-out.

Titan Industrial Heating Systems' Over-the-side Immersion Heaters incorporate an all welded junction box made of the same material as the heater sheath. This insures a liquid tight seal on the body and provides great physical protection. Make sure the chemical solution is above the minimum solution level bracket welded to the sheath.

Below you can select your Over the side Immersion Heater by choosing parameters such as [sheath material](#), your utility requirements, tank depth and [power requirements](#).



AQ-Series Over-the-Side Quartz Immersion Heater - Triple



AQ-Series-Over-the-Side-Quartz Immersion Heater Single



Triple tube Over-the-side immersion heater



CN-1 Series Over the Side Immersion Heater